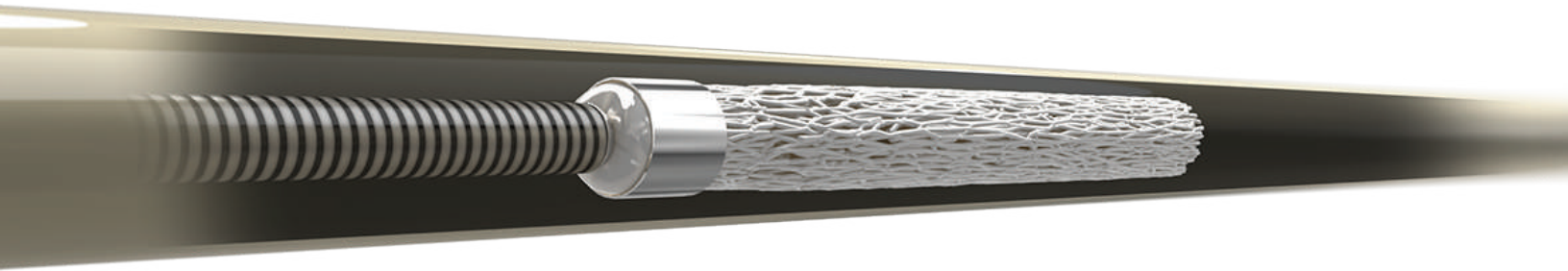
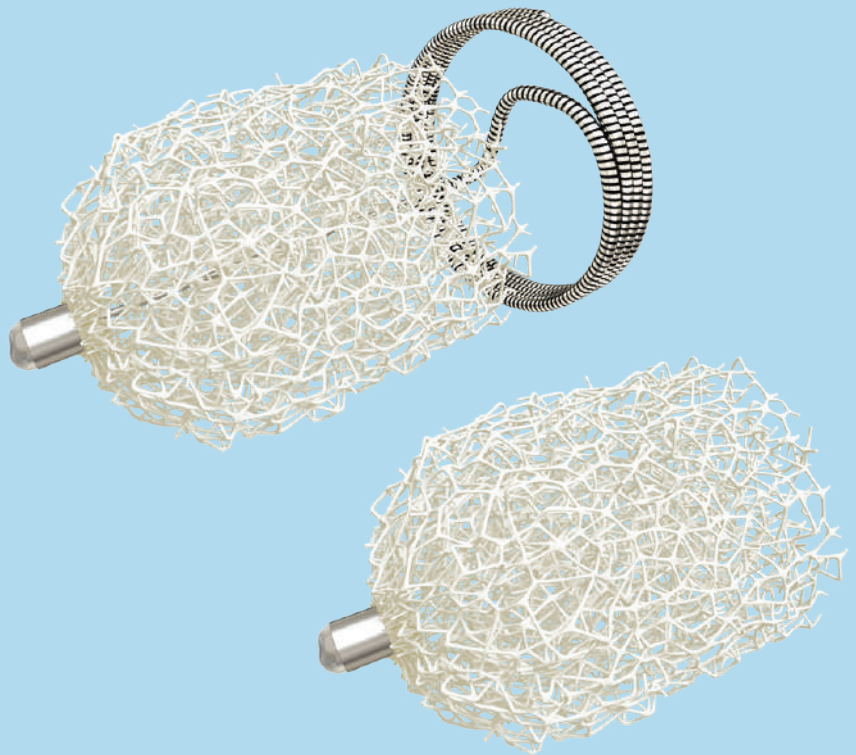


Shape Memory Polymer

Expanding Embolization Solutions



Space-filling
embolization
technology

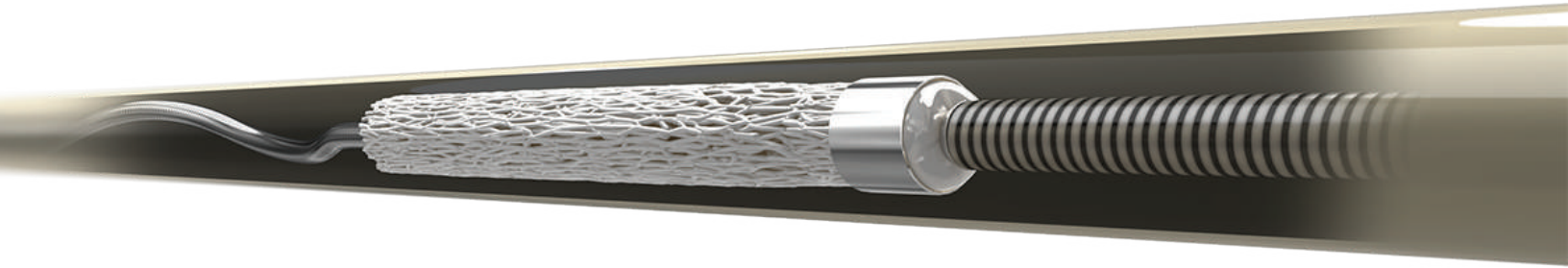


IMPEDE[®] & IMPEDE-FX

 **shape**[®]
memory medical

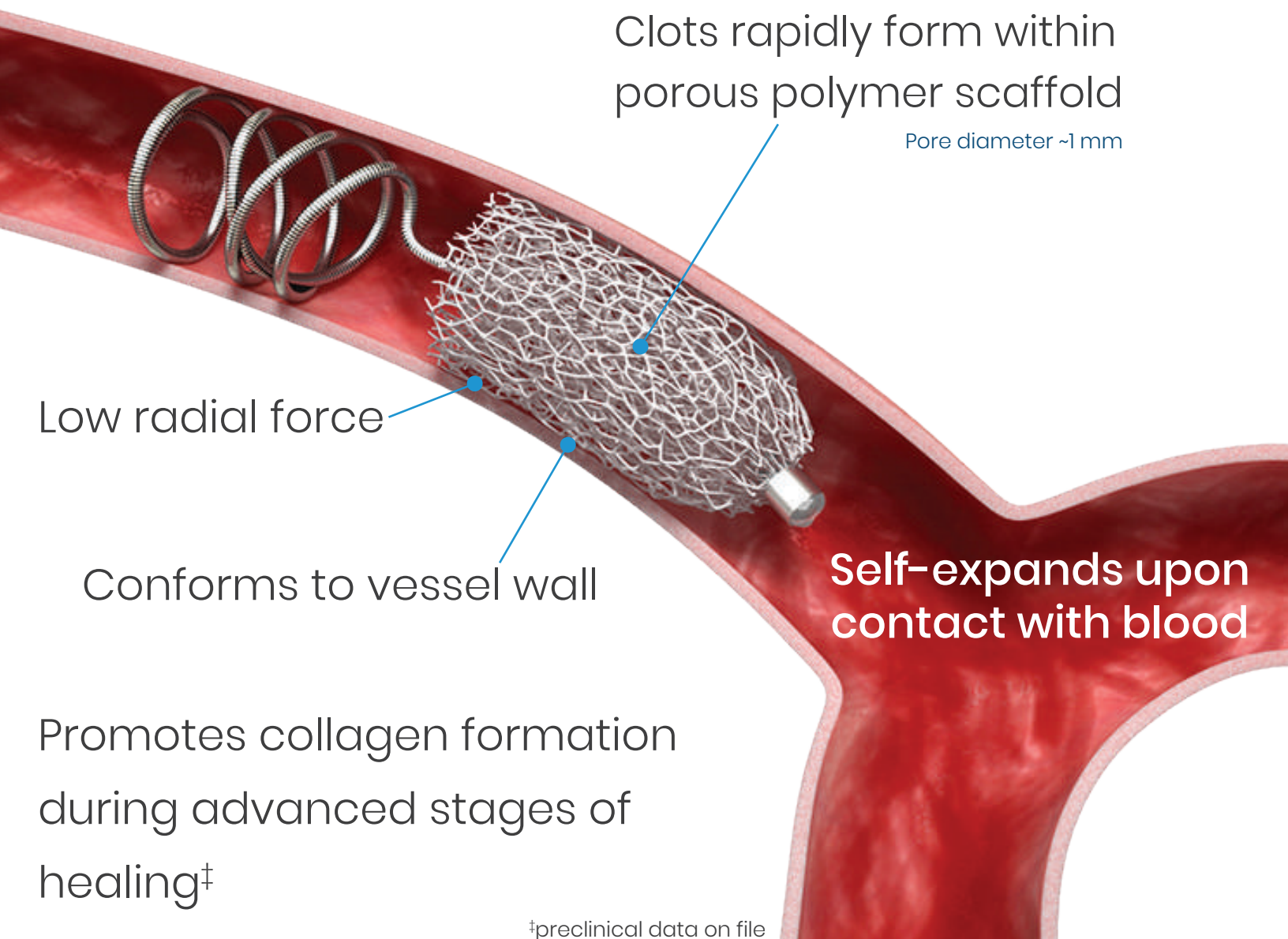
Shape Memory Polymer Technology

Crimped for catheter delivery



Clots rapidly form within porous polymer scaffold

Pore diameter ~1 mm



Low radial force

Conforms to vessel wall

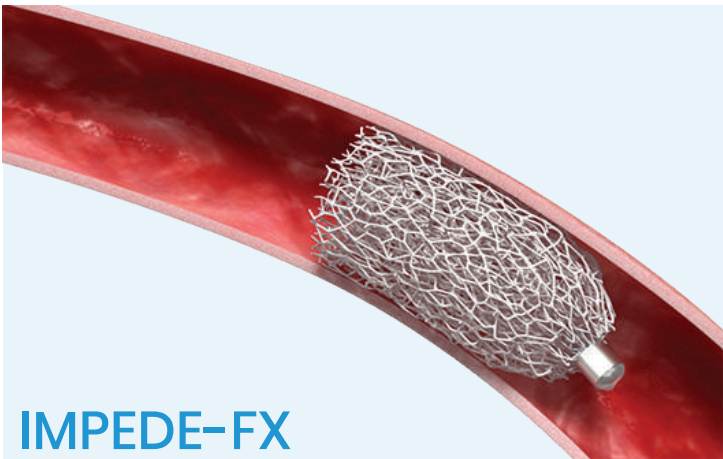
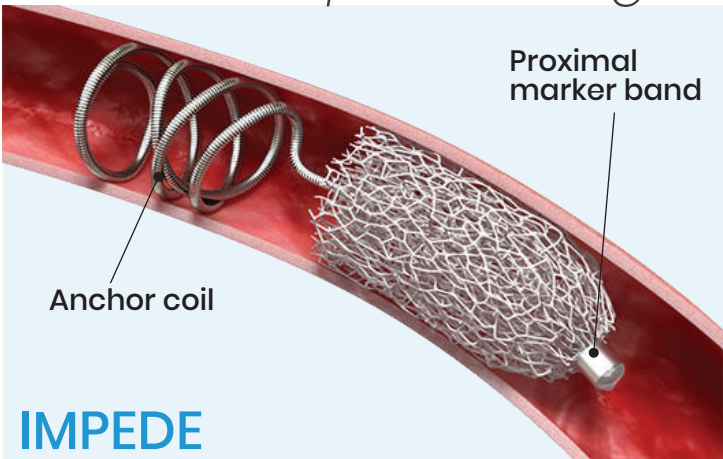
Self-expands upon contact with blood

Promotes collagen formation during advanced stages of healing†

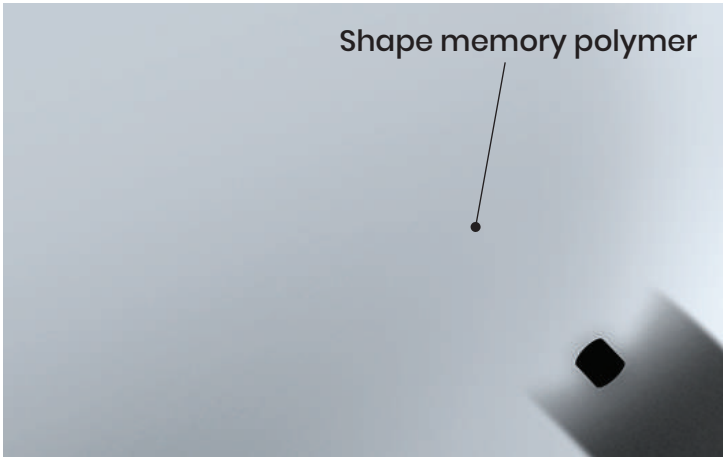
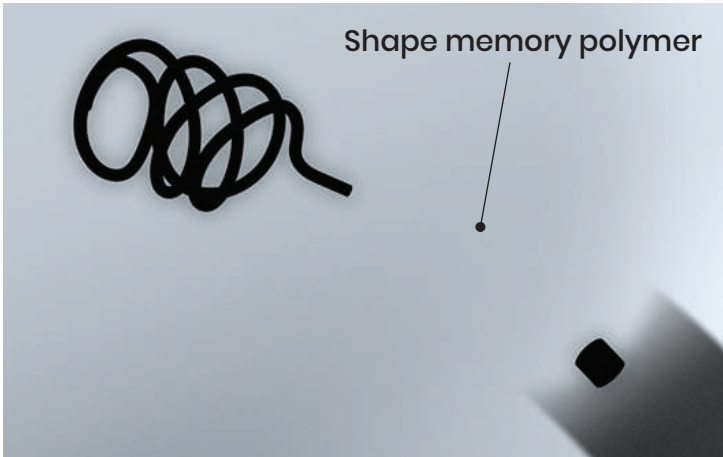
†preclinical data on file

Advantages in Embolization

Maximum space-filling



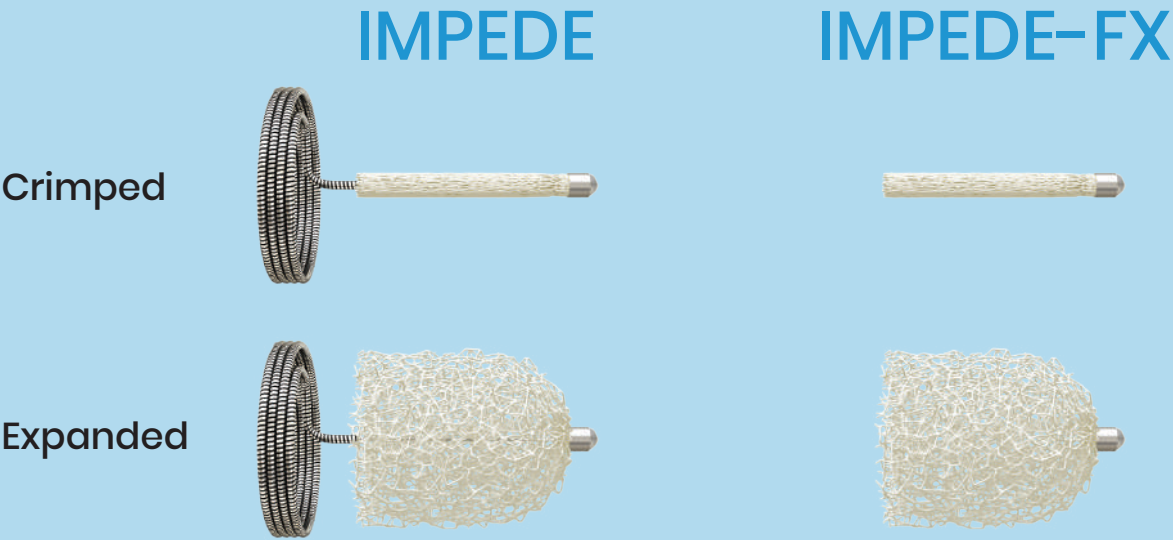
Stable occlusion



Minimal artifact



Dimensions & Details



		IMPEDE			IMPEDE-FX		
		IMP-05	IMP-07	IMP-10	IMP-FX-06	IMP-FX-08	IMP-FX-12
Vessel diameter	mm	2 – 5	4 – 7	6 – 10	—	—	—
Proximal marker diameter	inch	.032	.046	.065	.032	.046	.065
	mm	0.81	1.17	1.65	0.81	1.17	1.65
Expanded SMP plug diameter	mm	6	8	12	6	8	12
SMP plug length	mm	10	10	15	10	10	15
Anchor coil diameter	mm	7	9	13	—	—	—
Catheter ID*	min	.038	.055	.070	.038	.055	.070
	max						
	min	.057	.071	.090	.057	.071	.090
	max						

SMP, shape memory polymer. *Catheter recommendations based on .035" guidewire

INDICATION: The IMPEDE Embolization Plug is indicated to obstruct or reduce the rate of blood flow in the peripheral vasculature.

INDICATION: The IMPEDE-FX Embolization Plug is indicated to obstruct or reduce the rate of blood flow in the peripheral vasculature.

Indications, contraindications, warnings, and instructions for use can be found in the product labeling supplied with each device. The images are illustrative and do not represent actual vessel anatomy, nor the actual size of any products.

Patent: www.shapemem.com/patents

